

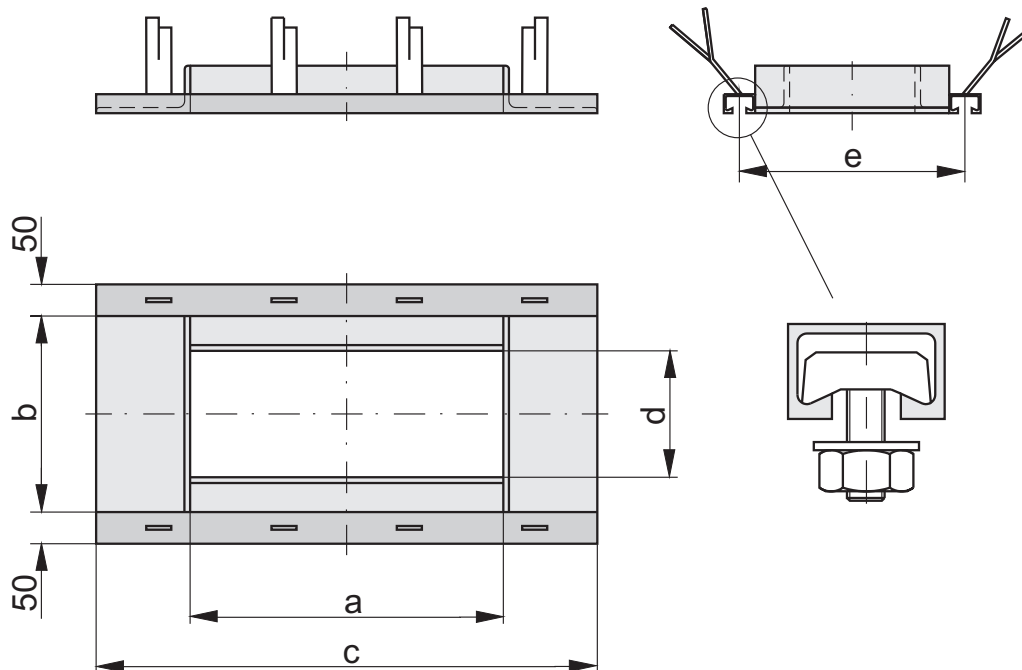
Standardausführung:  
Trommelmotor

Sonderausführungen wie:

- Wellkantengurt Flex80 Gurtbreite +50 mm
- andere Achs- oder Einlaufkastenmaße
- Bandbreite 800 oder 1000 mm
- alternativer Antrieb auf Anfrage

alle Angaben in mm

|              | Leistung<br>m <sup>3</sup> /min | Gurtbreite | a    | b    | c    | d1  | d2   | e   | f   | g   | h   | i   | k   |
|--------------|---------------------------------|------------|------|------|------|-----|------|-----|-----|-----|-----|-----|-----|
| DG 300-6/9   | 0,6                             | 300        | 800  | 600  | 900  | 175 | 700  | 240 | 360 | 450 | 295 | 355 | 350 |
| DG 300-6/12  |                                 |            |      |      | 1200 |     |      |     |     |     |     |     | 650 |
| DG 300-12/15 |                                 |            | 1400 | 1200 | 1500 | 260 | 1300 |     |     |     |     |     | 350 |
| DG 300-12/18 |                                 |            |      |      | 1800 |     |      |     |     |     |     |     | 650 |
| DG 400-6/9   | 0,9                             | 400        | 800  | 600  | 900  | 175 | 700  | 340 | 460 | 550 | 345 | 405 | 350 |
| DG 400-6/12  |                                 |            |      |      | 1200 |     |      |     |     |     |     |     | 650 |
| DG 400-12/15 |                                 |            | 1400 | 1200 | 1500 | 260 | 1300 |     |     |     |     |     | 350 |
| DG 400-12/18 |                                 |            |      |      | 1800 |     |      |     |     |     |     |     | 650 |
| DG 500-6/9   | 1,2                             | 500        | 800  | 600  | 900  | 175 | 700  | 440 | 560 | 650 | 395 | 455 | 350 |
| DG 500-6/12  |                                 |            |      |      | 1200 |     |      |     |     |     |     |     | 650 |
| DG 500-12/15 |                                 |            | 1400 | 1200 | 1500 | 260 | 1300 |     |     |     |     |     | 350 |
| DG 500-12/18 |                                 |            |      |      | 1800 |     |      |     |     |     |     |     | 650 |
| DG 650-6/9   | 1,7                             | 650        | 800  | 600  | 900  | 175 | 700  | 590 | 710 | 800 | 470 | 530 | 350 |
| DG 650-6/12  |                                 |            |      |      | 1200 |     |      |     |     |     |     |     | 650 |
| DG 650-12/15 |                                 |            | 1400 | 1200 | 1500 | 260 | 1300 |     |     |     |     |     | 350 |
| DG 650-12/18 |                                 |            |      |      | 1800 |     |      |     |     |     |     |     | 650 |



|               | a    | b   | c    | d   | e   |
|---------------|------|-----|------|-----|-----|
| DG 300-6/...  | 600  | 310 | 900  | 240 | 360 |
| DG 300-12/... | 1200 |     | 1500 |     |     |
| DG 400-6/...  | 600  | 410 | 900  | 340 | 460 |
| DG 400-12/... | 1200 |     | 1500 |     |     |
| DG 500-6/...  | 600  | 510 | 900  | 440 | 560 |
| DG 500-12/... | 1200 |     | 1500 |     |     |
| DG 650-6/...  | 600  | 610 | 900  | 590 | 710 |
| DG 650-12/... | 1200 |     | 1500 |     |     |